

 ANJALI |

SAREE

THE INDIE SAREE
COLLECTION - HAND
BLOCK-PRINTED BY
PERSONS WITH
PSYCHOSOCIAL
DISABILITIES.

CATALOGUE

SAREE CATALOGUE



Conceptualized in loving memory of Ms. Indrani Sinha — Co-Founder of Sanlaap India—this collection honours her vision and encouragement. It was Indranidi who first inspired the exploration of colour, form, and technique on textiles during SNEHA, a rehabilitation project in the early nineties that empowered children of sex workers in Kolkata.

These sarees are not only expressions of heritage craft; they are also revolutionary works created by residents of mental hospitals; spaces marked by silence, stigma, and isolation. Their hands question labour laws, the right to work, and society itself. Many of the blocks carry drawings made by the residents, transforming their original artwork into wearable pieces of history and humanity.



The Indie Sarees collection is a tribute to craftsmanship, memory, and the quiet power of art born in unexpected places. Made from soft mul cotton and adorned with intricate block prints carved from engraved wooden blocks, each piece reflects the exceptional artistry of Anjali's block-printing unit.

Indie Sarees is therefore not just a collection. It is a continuum of memory, resistance, and art, where every print carries a story, every colour carries a voice, and every saree carries a life.



CONTENTS



BLOCK PRINT SAREES 6-47

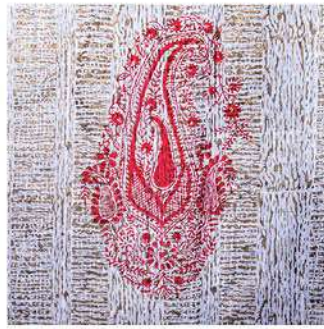
BIJOYA	6
PATABAHAR	8
SUNDARBAN	10
MALANCHA	12
CHATUSHKON	14
JALKOL	16
TAPOBAN	17
HONGSHODHWANI	18
BANGLAR BAGH	20
NANDINI	22
ISITI	24
RONGMILANTI	26
KOLOTAN	28
BONANI	30
MAYURI	32
GAJAL	33
NEO POP RED	34
NEO POP GREEN	35
NILAMBARI	36
NEON	38
KACHHIM	39
KIRAN MALA	40
HIJIBIJI	42
ARSHINAGAR	44
CHALCHITRA	45
GULABO	46



BLOCK PRINTED SAREES

Block-printed sarees are built on rhythm, not perfection. Each impression carries the pressure of the hand, the pause between repeats, and the slight variations that give cloth its life.

Hand block-printed by residents of mental hospitals, these sarees are made using carved wooden blocks, many translated from the makers' own drawings. The patterns carry visible traces of labour, memory, and intent. What emerges is not uniformity, but a dynamic presence—process made visible on cloth.



Serial No.: A0001

BIJOYA বিজয়া

Price: ₹2399

Cream saree highlighted with red borders and a central figurative block print, where subtle body texture supports festive emphasis with restrained elegance.





PATABAHAR

পাতাবাহার

Price: ₹2399

Serial No.: A0002

Light beige saree with fine leaf-vein-like block-printed textures across the body, contrasted by an olive anchol featuring bird silhouettes and ornamental floral block-printed borders.





SUNDARBAN

সুন্দরবন

Price: ₹2899

Serial No.: A0003

Also
available in
this colour.



Deep charcoal
saree layered with
organic block-
printed tiger figures
within circular
motifs, evoking
forest depth and
movement.



Serial No.: A0004

MALANCHA

মালঞ্চা

Price: ₹2399

White saree densely covered with red floral block prints, balanced by a anchol with dots and a red border that grounds the composition in bold traditional strength.





Serial No.: A005

CHATUSHKON

চতুষ্কোণ

Price: ₹2399



Black-and-white saree defined by fine geometric block prints arranged in grid-like repetition, contrasted with an anchor featuring a large circular block print motif that adds structure and graphic clarity.



Serial No.: A0007

TAPOBAN তপোবন

Price: ₹2399



Serial No.: A0006

JALKOL জলকল

Price: ₹2399

Off-white saree featuring small black block-printed fish motifs across the body, paired with a green anchol detailed with dots, lines, and architectural block patterns.



White saree adorned with blue and grey block-printed nature motifs, supported by textured borders that suggest forest stillness, balance, and organic calm.

Serial No.: A0008

HONGSHODHWANI

হংসধ্বনি

Price: ₹2699



White saree featuring fine block-printed floral motifs and soft horizontal bands, creating a gentle rhythmic flow across the body and anchol with understated, lyrical elegance.



Serial No.: A0009

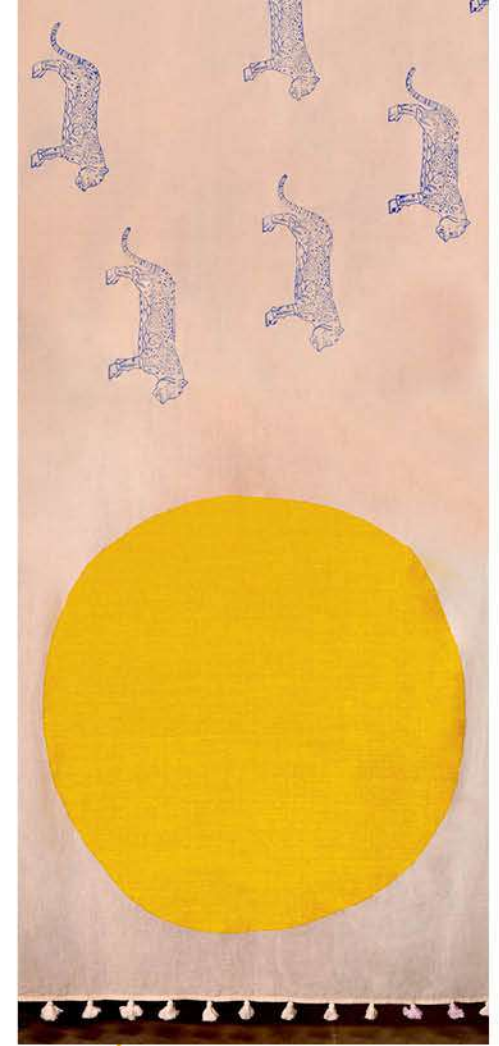
BANGLAR BAGH

বাংলার বাঘ

Price: ₹2499



Also
available in
this colour.



White saree punctuated with hand block-printed tiger motifs across the field, anchored by a bold red and white anchor that intensifies folk narrative contrast.



Serial No.: A0010

NANDINI
নন্দিনী

Price: ₹2399



White saree with scattered red bird block prints and striped borders, combining open negative space with playful folk imagery and rhythmic repetition.



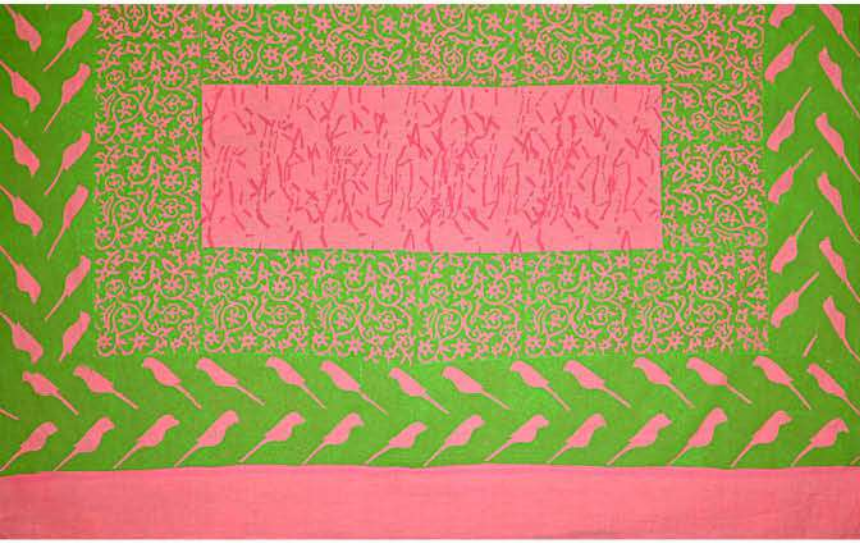


Serial No: A0011

ISITI
ইসিটি
Price: ₹2399

Soft white saree marked by large circular block prints, balancing open space with deliberate graphic punctuation and visual restraint.





Serial No.: A0012

RONGMILANTI রঙমিলান্তি

Price: ₹2699

Green saree layered with vivid pink leaf block prints arranged diagonally, framed by patterned borders that heighten colour dialogue and surface energy.



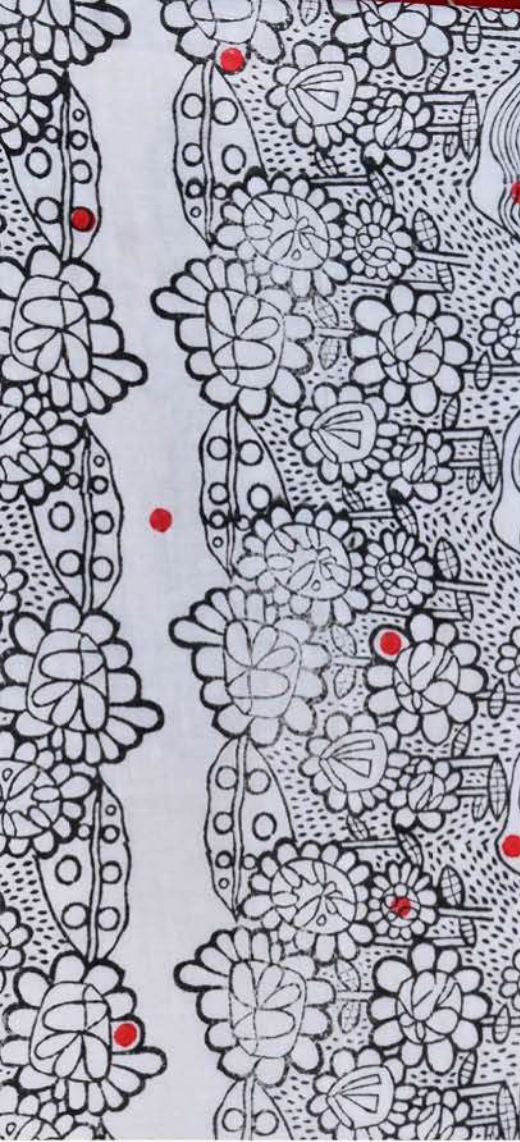


White saree featuring repeated black bird block prints across the body, paired with striped borders that add direction, rhythm, and measured movement.



Serial No.: A0013

KOLOTAN
কলতান
Price: ₹2399



Serial No: A0014

BONANI

বনানী

Price: ₹2399

Soft white-grey saree featuring delicate white block-printed dot motifs across the body, paired with a floral black-and-white block-printed anchol edged in subtle red accents.





Serial No.: A0015

MAYURI

ময়ূরী

Price: ₹2399

Bright yellow saree featuring peacock and floral block prints across the body, framed by structured striped borders, where dense motifs meet clean lines and festive warmth.



Serial No.: A0016

GAJAL

গজল

Price: ₹2399



Grey and pink saree with block-printed textural patterns, creating a strong interplay between colour fields and woven depth.





Serial No.: A0017

NEO POP RED

নিও পপ রেড

Price: ₹2399

Light-toned saree scattered with multicoloured circular block prints, paired with a red patterned anchol that introduces playful contrast and graphic clarity.



NEO POP GREEN

নিও পপ গ্রিন

Price: ₹2399

Serial No.: A0018



Pale saree featuring green circular bird block prints and angular geometric borders, combining pop-inspired repetition with controlled contemporary visual structure.



Serial No.: A0019

NILAMBARI

নীলাম্বরী

Price: ₹2399

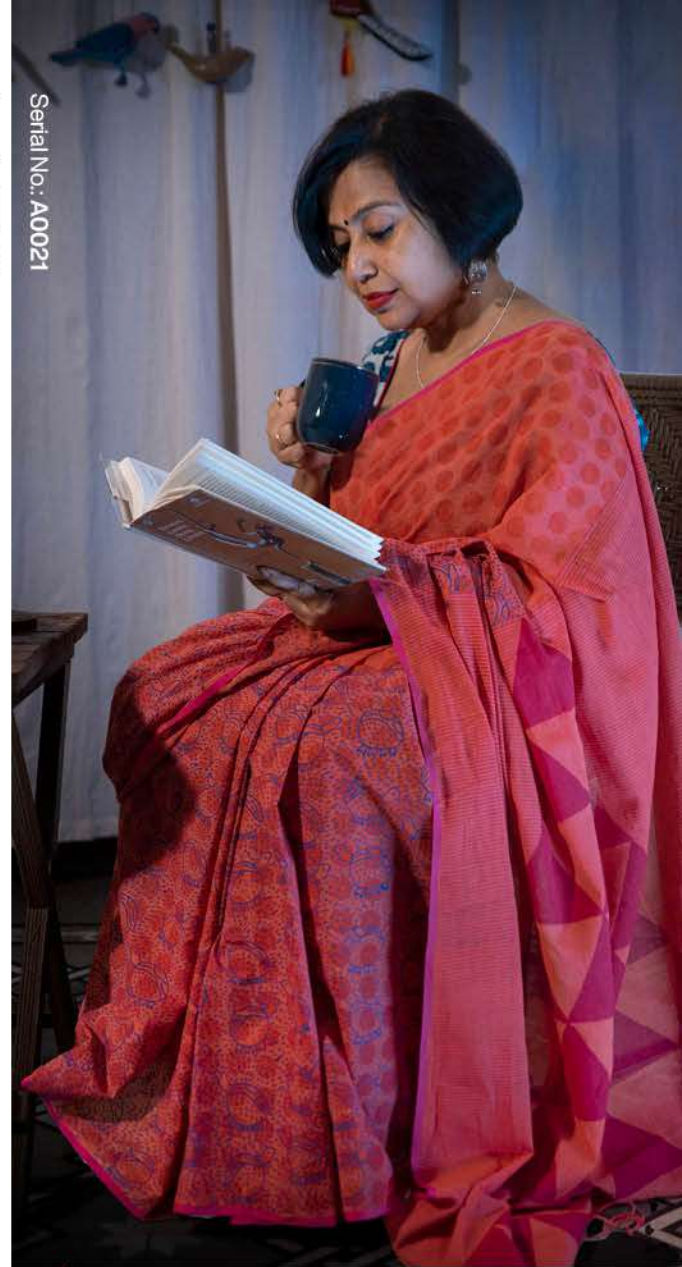


Soft white saree featuring deep blue bird block prints scattered across the field, framed by textures that guide movement and visual flow.



KACHHIM
কচ্ছিম
Price: ₹2399

Serial No.: A0021



Serial No.: A0020
NEON
নিয়ন
Price: ₹2899

Dark-toned saree featuring fine block-printed bird motifs and subtle textural layering, where restrained patterning meets a contemporary, urban visual sensibility.

Warm red saree adorned with circular block prints and turtle motifs across the body, complemented by tonal borders that lend softness, warmth, and everyday comfort.



Serial No: A0022

KIRAN MALA
কিরণমালা

Price: ₹2399

White saree defined by fine linear block prints and a single bold red circular motif, creating visual focus through contrast and spatial restraint.



Serial No.: A0023

HIJIBIJI

হিজিবিজি

Price: ₹2399



White saree animated with playful black and green abstract block prints across the body, balanced by striped textures and a softly patterned anchol.



Serial No.: A0024

ARSHINAGAR

আরশিনগর

Price: ₹2399

White saree built from layered stripes, checks, and block-printed borders, referencing urban grids through repetition, alignment, and structural clarity.



CHALCHITRA

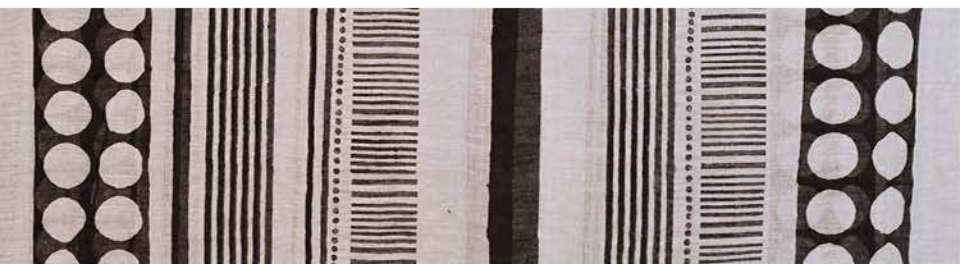
চালচিত্র

Price: ₹2399

Serial No.: A0025



Off-white saree enriched with paisley block prints placed rhythmically across the body, supported by understated borders and narrative textile detailing.





Serial No.: A0026

GULABO

গুলাবো


Price: ₹2399

Rich pink saree featuring layered block-printed patterns and tonal stripes, paired with a textured anchol that enhances depth, warmth, and relaxed elegance.





CONTACT US

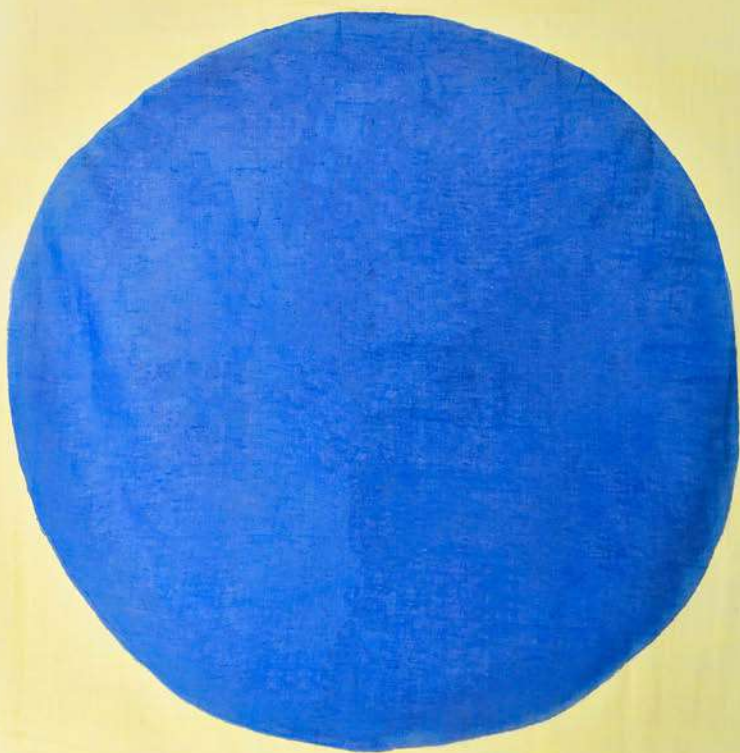
 +91 9836761738

 info@anjalimhro.org

 www.anjalimhro.com

P101, C.I.T. Road, Kolkata 700014, West Bengal, India.

 **ANJALI**



*all prices are inclusive of GST